

# WORKING GROUP ON ADDITIONAL TIMES METHODOLOGIES



**Aviation Intelligence Unit / PRU**

Rue de la Fusée 96, B-1130 Brussels, Belgium

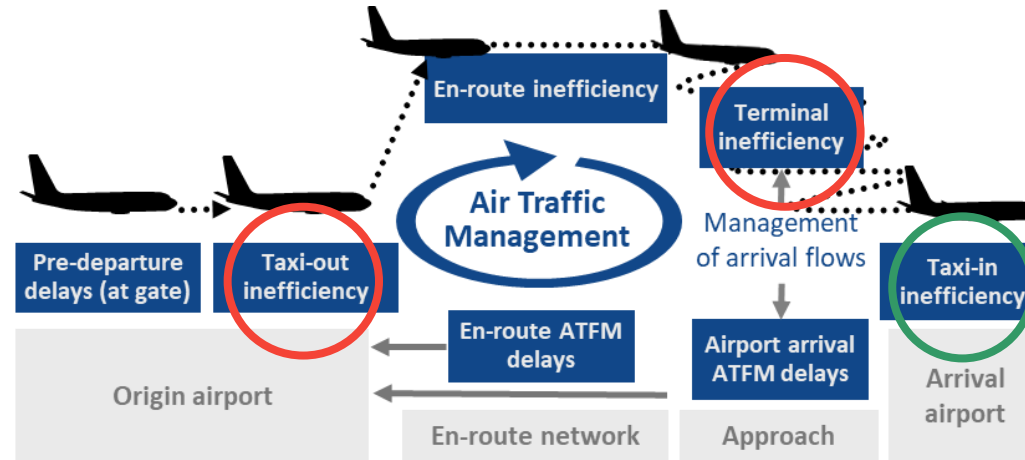
[www.ansperformance.eu](http://www.ansperformance.eu)

# Objective and Scope of the Working Group on Additional Times

- Review identified issues in the additional times methodologies and calculations
- Propose and analyse solutions
- Reach agreement on changes

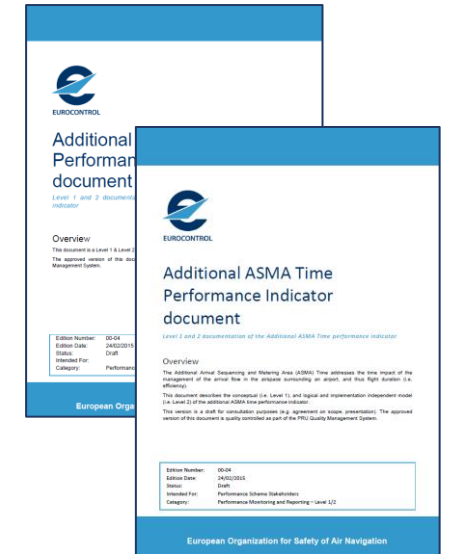
- Scope:

- Additional ASMA time
- Additional taxi-out time
- Additional taxi-in time (new)



- Indicators used in:

- Eurocontrol Performance Review System
- SES Performance Scheme



# Additional Taxi-out and ASMA methodologies: Status 2022 and rationale for the creation of the working group

**Reference based:** the efficiency is calculated by measuring the actual times against a reference that estimates the required time to perform the approach or the taxi-out phase.

## CALCULATION OF THE REFERENCE

- Identification of Unimpeded Flights** → Highly complex
- Updates required when procedures/conditions change
    - Monthly hands-on monitoring required
      - Difficult to reproduce

## REVISION OF METHODOLOGIES FOR ADDITIONAL TIMES (ASMA AND TAXI OUT) REQUIRED

### INTRODUCTION OF ADDITIONAL TAXI IN TIMES

#### Requirements

- Take into account the concerns from stakeholders and findings from previous work.
- Ensure reproducibility
- Simplify, automate where possible
- Similar approach for all three indicators

# WORKING GROUP Additional times methodologies

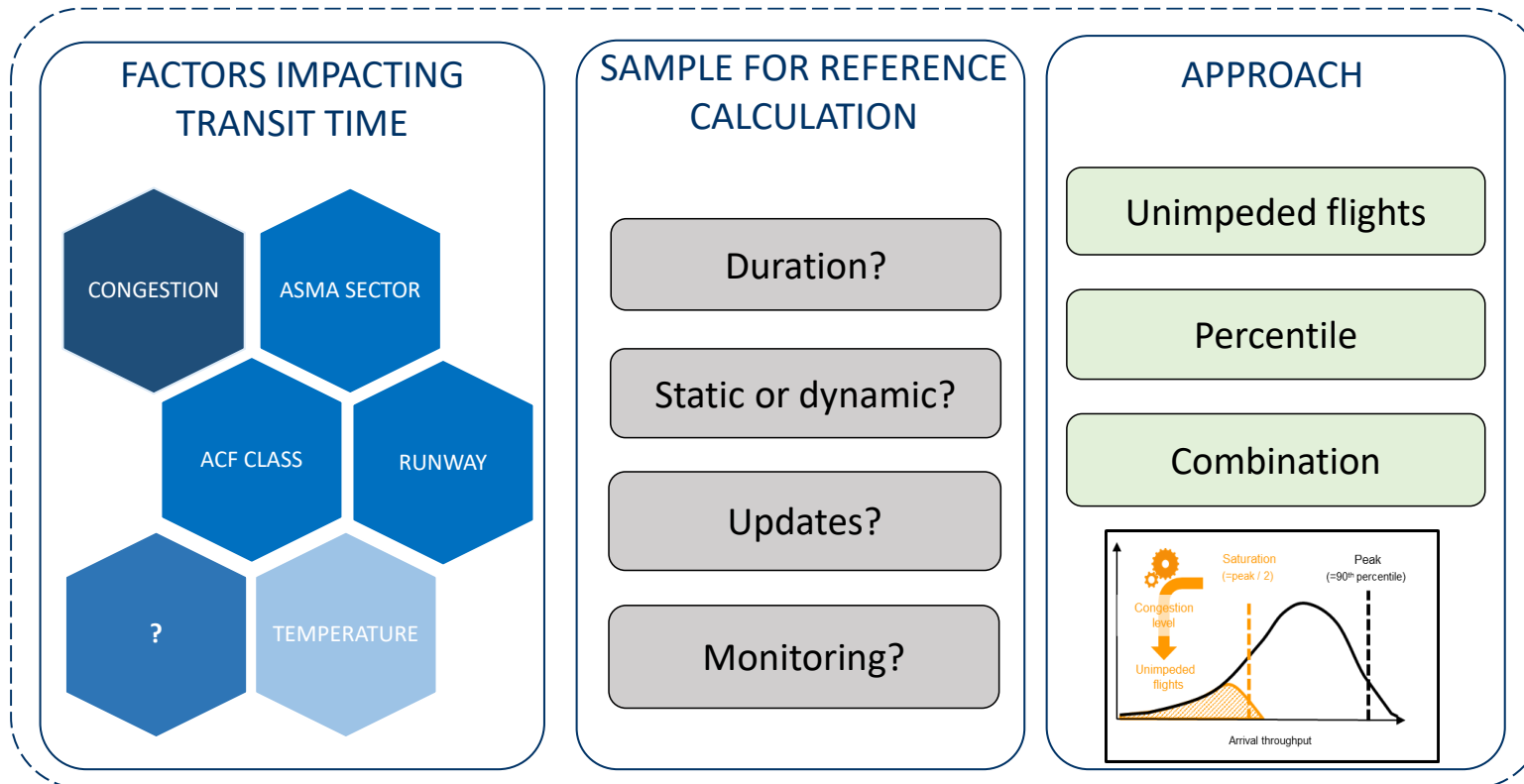
Involving stakeholders



# Working on the reference times

Breakdown of the different components and aspects:

- analysis of what factors should be taken into account
- selection of the period used for the calculation of the reference
- what's the best mathematical approach to obtain these reference times



Eurocontrol run multiple analysis, evaluating options and doing impact assessment, sharing all results with the WG to support the decision making.

All the decisions are taken by vote of the working group members.

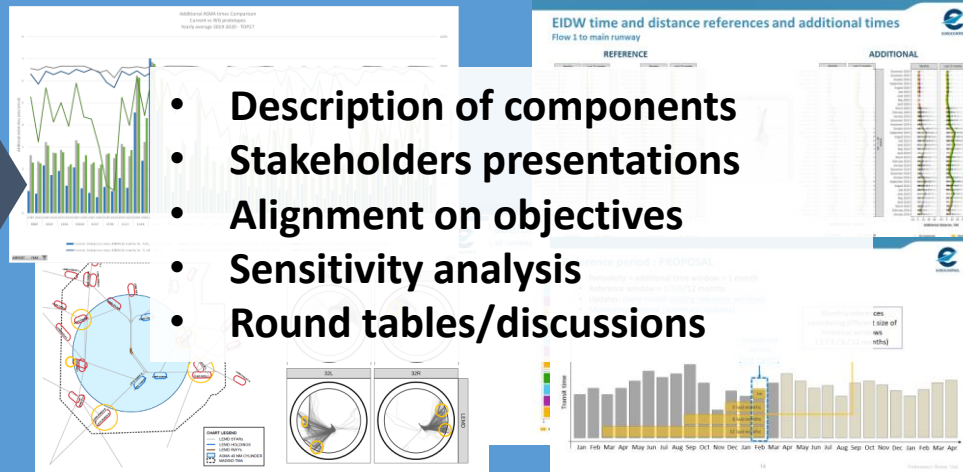
Eurocontrol remains neutral, only presents evidence.

# Working Group meetings and work done

Kick Off Meeting  
10-Nov-2021

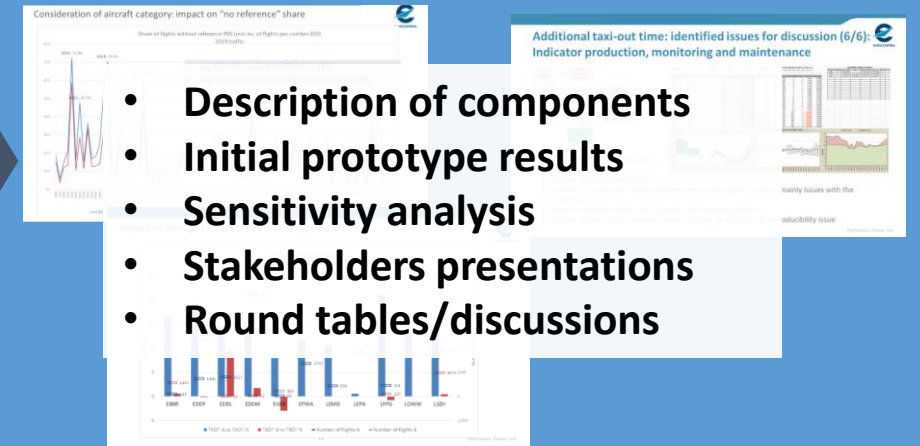
Key issues  
and WG  
objectives

ASMA Working meetings  
22-Nov-21, 14-Dec-21, 15-Feb-22, 29-Mar-22



Agreement on  
ASMA  
methodology

TAXI Working meetings  
05-May-21, 10-June-22, 05-Jul-22, 07-Sep-22, 10-Oct-22



Agreement on  
Taxi-out and Taxi-in  
methodology

# Steps and progress

